

FIGHTING THE FLU AT YOUR WORKPLACE



FLU SEASON ILLNESS DAYS
NORTH: OCTOBER-APRIL
SOUTH: MAY-SEPTEMBER

SEASONAL INFLUENZA (OR FLU) IS A SERIOUS DISEASE THAT CAN AFFECT EVERYONE, INCLUDING YOU, REGARDLESS OF YOUR AGE, GENDER, OR HEALTH CONDITION. PREVENTING YOU FROM CATCHING THE FLU WILL GENERATE NOT JUST BETTER HEALTH FOR YOU BUT ALSO SOCIAL AND ECONOMIC BENEFITS FOR THE COMMUNITY. THIS IS PRECISELY WHY TAKING A FLU SHOT EVERY YEAR AT YOUR WORKPLACE IS YOUR EMPLOYER'S BEST HEALTH BUY AND A SIGNIFICANT CONTRIBUTOR TO PROTECTING YOU AND YOUR FAMILY, AND CREATING HEALTHIER WORKING ENVIRONMENT.

CATCHING THE FLU, FEAR OF CATCHING IT, OR STAYING AT HOME TO CARE FOR THOSE IN THE FAMILY WHO HAVE CAUGHT IT CAN INCREASE FLU-RELATED WORK ABSENCES AND RESULT IN SIGNIFICANT PRODUCTIVITY LOSSES. (1)



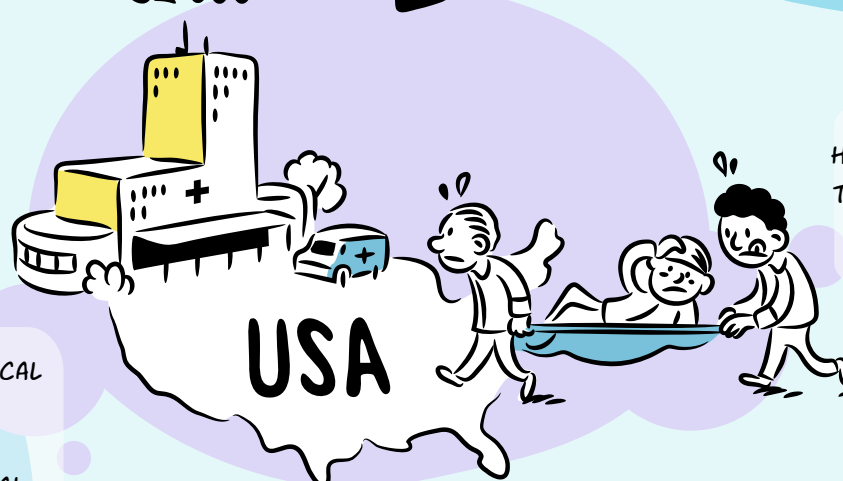
AMONG UNVACCINATED INDIVIDUALS 50 - 64 YEARS OF AGE, FLU-LIKE ILLNESS WAS RESPONSIBLE FOR 45% OF ILLNESS DAYS DURING THE FLU SEASON (2)



YOUR WORK IS THE SECOND MOST COMMON PLACE AFTER YOUR DOCTOR'S FOR GETTING A FLU SHOT.



32,000



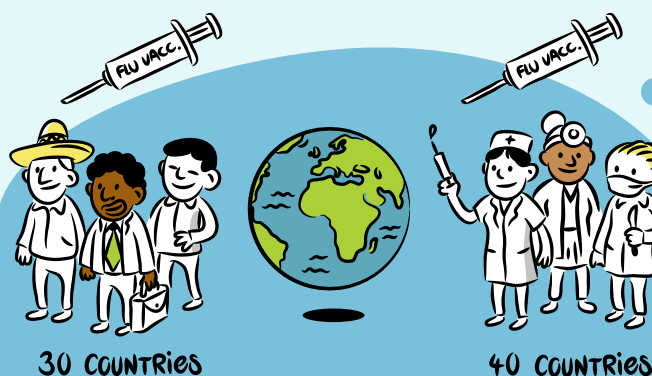
IN THE US ALONE, SOME 32,000 HOSPITALIZATIONS ANNUALLY ARE FLU-RELATED. THE LIKELY PRODUCTIVITY LOSSES DUE TO FLU SICKNESS AND DEATH CAN ACCOUNT FOR ABOUT USD 16.3 BILLION EVERY YEAR (3)

IN AN INFLUENZA EPIDEMIC, THE TOP FIVE SECTORS THAT ARE THE MOST AFFECTED ARE:

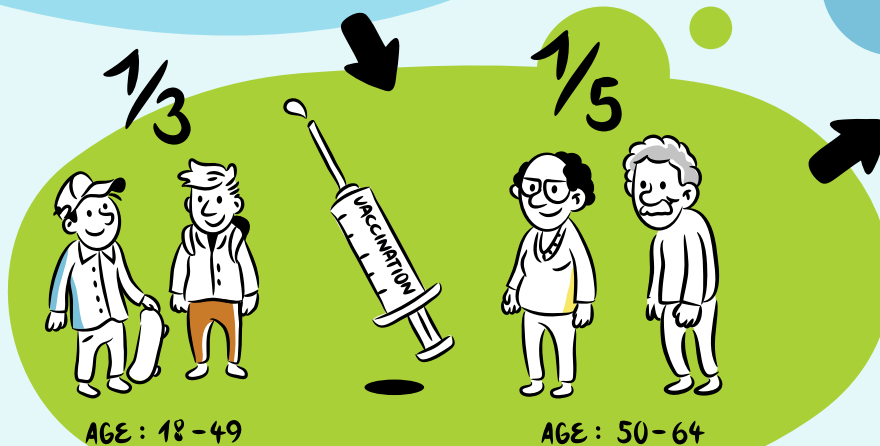
THOSE WITH THE HIGHEST ECONOMIC LOSSES ARE:

- SOCIAL ASSISTANCE
- HOSPITALS, NURSING, AND RESIDENTIAL CARE FACILITIES
- AMBULATORY HEALTH CARE SERVICES
- CONSTRUCTION
- STATE AND LOCAL GOVERNMENT ENTERPRISES

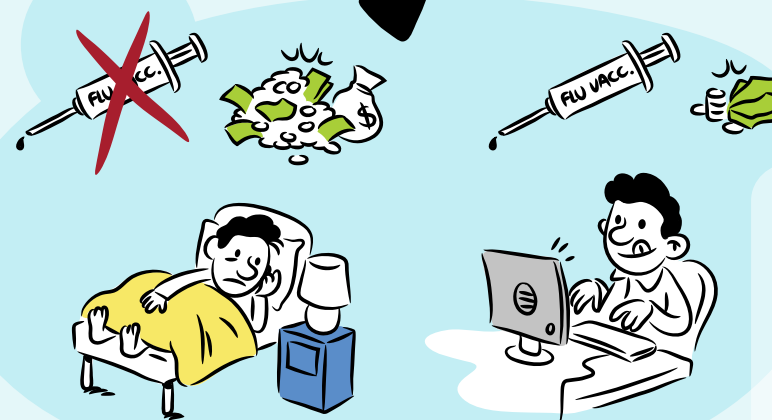
- PUBLIC SECTOR AT LOCAL AND FEDERAL LEVELS
- VARIOUS PROFESSIONAL, SCIENTIFIC, AND TECHNICAL SERVICES
- LEGAL SERVICES
- OTHER SERVICES, APART FROM PUBLIC ONES (4)



OVER 30 COUNTRIES RECOMMEND FLU VACCINATION TO SOME OR ALL WORKERS OUTSIDE OF THE HEALTHCARE PROFESSION AND OVER 40 COUNTRIES RECOMMEND SEASONAL FLU VACCINATION TO HEALTHCARE PROFESSIONALS (6)



ONE THIRD OF WORKERS AGED 18-49 YEARS AND ONE FIFTH OF THOSE AGED 50-64 YEARS RECEIVE THEIR FLU SHOTS AT WORK (5)



AT THE START OF EACH FLU SEASON, WORKERS AND THEIR FAMILIES SHOULD GET THEIR FLU SHOTS AND ASK OTHERS TO DO THE SAME. STOP THE SPREAD AND SPREAD THE WORD!

1. GERSHON RR, MAGDA LA, GURESHI KA, RILEY HE, SCANLON E, CARNEY MT, RICHARDS RJ, SHERMAN MF. FACTORS ASSOCIATED WITH THE ABILITY AND WILLINGNESS OF ESSENTIAL WORKERS TO REPORT TO DUTY DURING A PANDEMIC. JOURNAL OF OCCUPATIONAL AND ENVIRONMENTAL MEDICINE. 2010; 52(10):995-1003

2. CENTERS FOR DISEASE CONTROL AND PREVENTION (CDC). PLACE OF INFLUENZA VACCINATION AMONG ADULTS. UNITED STATES, 2010-11

3. (MOLINARI NA, ORTEGA-SANCHEZ IR, MESSONNIER ML, THOMPSON WW, WORTLEY PM, WEINTRAUB E, ET AL. THE ANNUAL IMPACT OF SEASONAL INFLUENZA IN THE US: MEASURING DISEASE BURDEN AND COSTS. VACCINE 2007; 25:S086-96)

4. (EL HAIMAR A, SANTOS JR. MODELING UNCERTAINTIES IN WORKFORCE

DISRUPTIONS FROM INFLUENZA PANDEMICS USING DYNAMIC INPUT-OUTPUT ANALYSIS. RISK ANAL. 2014 MAR;34(3):401-15)

5. (LEE, B. Y., BAILEY, R. R., WIRINGA, A. E., AFRYIE, A., WHITESKA, A. R., SMITH, K. J., + ZIMMERMAN, R. K. (2016). ECONOMICS OF EMPLOYER-SPONSORED WORKPLACE VACCINATION TO PREVENT PANDEMIC AND SEASONAL INFLUENZA VACCINE, 28(37), 5952-5959.)

6. (WHO REGIONAL OFFICE FOR EUROPE. EVALUATION OF SEASONAL INFLUENZA VACCINATION POLICIES AND COVERAGE IN THE WHO EUROPEAN REGION. RESULTS FROM THE 2008/2009 AND 2009/2010 INFLUENZA SEASONS BASED ON A JOINT VERICE-ECD-C-WHO SURVEY. 2014. COPENHAGEN: DEPARTMENT OF HEALTH, STATE GOVERNMENT OF VICTORIA, AUSTRALIA. HEALTH IMMUNIZATION; PUBLIC HEALTH AGENCY OF CANADA. CANADIAN IMMUNIZATION GUIDE, PART 3 -